

**Christchurch Jowett Parts Shed**, "Idlewood" 771a McLeans Island Rd,

Open 10.00~12.00 Wednesdays and Saturdays.

Chris Tarrant 338 1191, Vic Morrison 03 318 2641

The **Club Car**: Is available for use on Club events.

Ring Bryan Spragg, ph. 325 7515 for bookings.

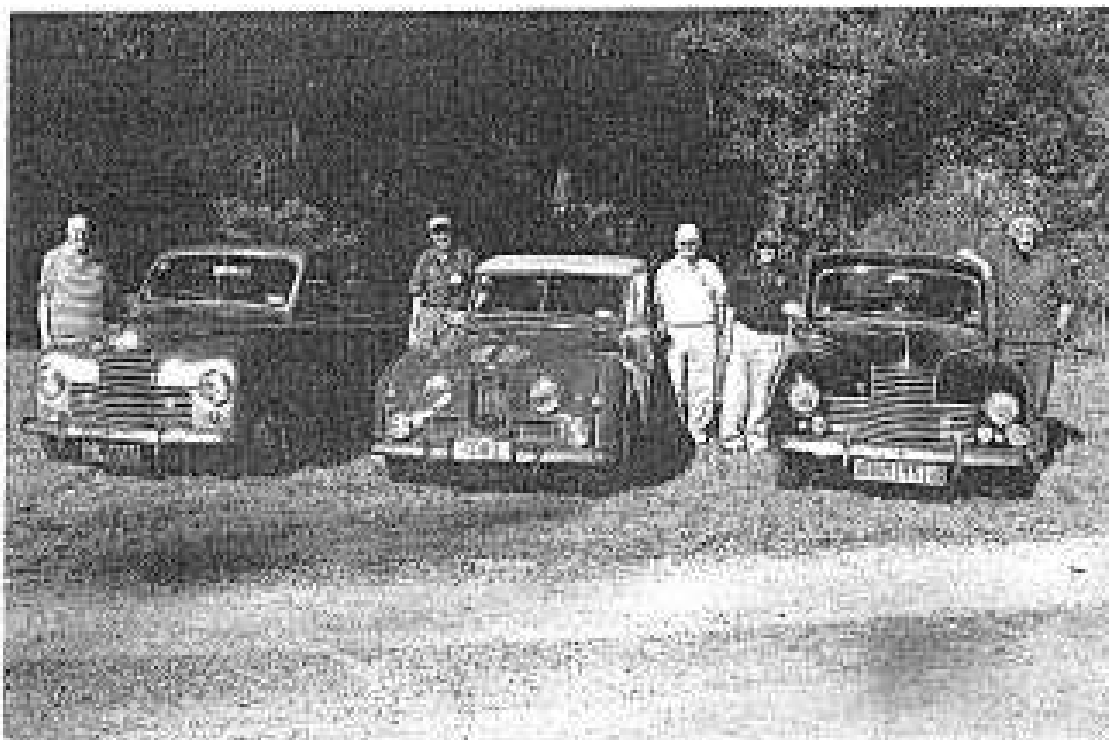
The **Club Library**: is held at Idlewood.

**South Island Rally**: Alexandra, 10 ~ 13 November (Canterbury Show Weekend)

Garry and Bryan are working at it.

**Branch Officers and Committee**

Branch President	Garry Corner	347 8468	<u>Committee:</u>	
Vice President	Bryan Spragg	325 7515	Alan Harris	942 4880
Secretary	Alastair Berney	981 4061	David Homersham	366 9045
Treasurer	Owen Bartram	332 6642	Bernard Lord	383 0955
Patron	John Moody	388 9197	Todd Skurr	347 3217
Librarian	Bryan Spragg	325 7515		
Trophy Custodian	Marie Goodwin	359 7510		
S.I. Branch editor	Vic Morrison	03 318 2641		



**2010 Jowett National Rally, Fielding.**

**The Mainland team:**

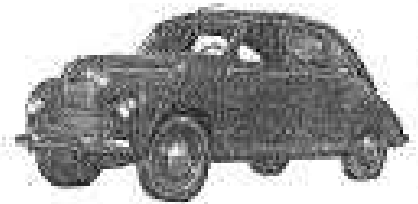
(L to R ) Owen Bartram, Vic Morrison, Arthur Goodwin, Bryan Spragg, Garry Corner.

# Jowett Car Club of New Zealand

## **FLAT CHAT**

### South Island

### Branch Newsletter



February ~ June 2011

#### Calendar of events:

- Feb** Sun 20 Afternoon run. Walk around the Botanic gardens. Meet at the Rolleston Ave car park 2.00pm. Garry Corner 347 8468
- Mar** Tues 8 Dining out! At Papanui Club, 310 Sawyers Arms Rd. 6.30pm. Arthur Goodwin 359 7510
- Sun 13 Afternoon run. Meet at Idlewood 1.30pm. Leave 2.00pm sharp for Whitecliffs Domain. Vic Morrison 03 318 2641
- Fri 18 ~ Mon 21 Jowett National Rally, Ohakune.
- Sat 26 ~ Sun 27. McLeans Island Vintage Country Fair. V.C.C. grounds.
- Apr** Sat 2 Wichester Swap Meet.
- Sat 9 Oamaru's All British Car Day, Takaro Park. Be there by 9.00am. First car departs for run at 10.30 sharp. BYO picnic lunch. You can make it a week-end trip: drive down Friday, home Sunday. Last year it was a great week-end away. Would those interested please ring Garry Corner. 03 3487 8468.
- Sun.17 Coffee at Sumner, 2.00pm. Meet at Ferrymead Mitre 10 car park. Leaving at 2.30pm. Sharp!!
- May** Sat 7 Ashburton Swap Meet.
- Sun 22 Fish & chip run to Akaroa. Meet at 9.30 am. At Tai Tapu General Store. Leaving at 10.00am. sharp. Bryan Spragg. 325 7515
- June** Tues 7 7.00 coffee at Coffee Club On Halswell, Halswell Shopping Centre. (Halswell Tavern). Bryan Spragg. 325 7515
- Sun 19 Kite Day at Spencer Park, Spencerville. Bring your kite and meet at Park Store entrance at 2.00pm. BYO afternoon tea. Garry Corner 347 8468

